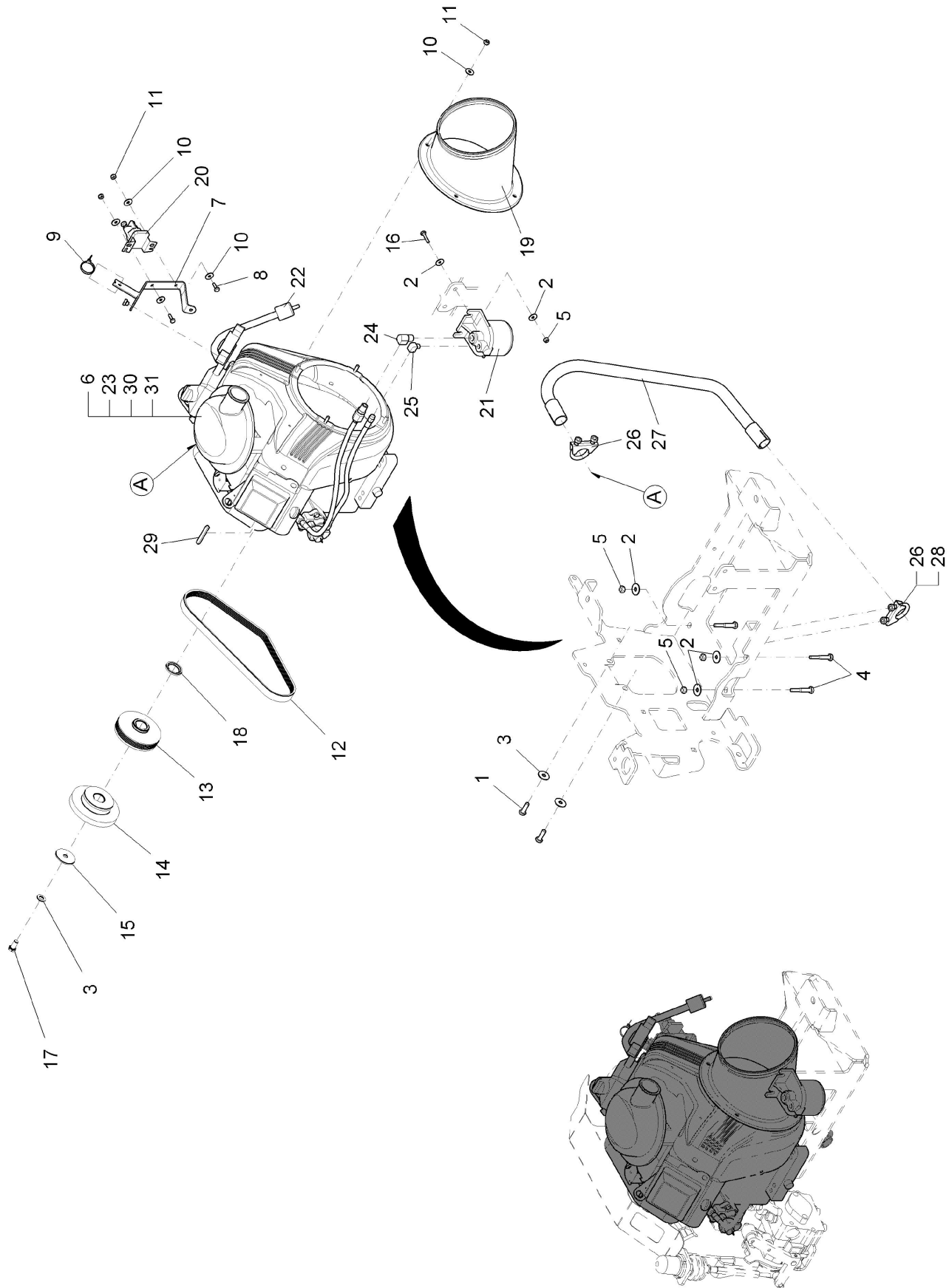


Motor P (V) cpl. - part 2 (97091268-2)



Pos.	Part No.	Material number	Description	Qty.	Unit	Remarks
1	01134400	11042223	hexagon screw	2	PC	
2	00042900	12332029	Washer	7	PC	
3	01160910	12520129	Detent edged washer	3	PC	
4	00138180	11032190	Hex.bolt	3	PC	
5	00051510	12040051	Hex. Nut	5	PC	
6	03007730	90502154	Engine	1	PC	
7	01112420	90510884	Console	1	PC	
8	00053010	11038072	Hex.bolt	2	PC	
9	00967760	90156688	Cable tie	1	PC	
10	00135120	12332011	Washer	8	PC	
11	00051520	12040044	Hex. Nut	6	PC	
12	01111400	16422370	Ribbed band	1	PC	
13	01111340	90511031	V-belt pulley	1	PC	
14	01111350	90510918	Belt pulley	1	PC	
15	00532940	90319807	Washer	1	PC	
16	00053110	11038254	Hexagon screw	2	PC	
17	01111420	11041068	Hexagon screw	1	PC	
18	01112430	90510892	Stop ring	1	PC	
19	01113080	90522749	Air tunnel	1	PC	
20	01132680	01132680	Starter relay	1	PC	
21	01112530	01112530	Oil filter	1	PC	
22	01112540	01112540	Fuel filter	1	PC	
23	01003070	01003070	Spark plug	2	PC	
24	01112440	90531880	Angle screwing	1	PC	
25	01112450	90518028	Angle screwing	1	PC	
26	01111380	90490855	Exhaust clip	2	PC	
27	01112460	96109103	Exhaust pipe V front	1	PC	
28	00740090	12520053	Detent edged washer	2	PC	
29	01002600	13540457	Feather key	1	PC	
30	01018610	90365271	Seal	1	PC	see document in "document links" (window bottom left)
31	01135170	01135170	generator regulator	1	PC	